

# The Grapevine

February & March 2020

Issue 14

£1



**The Church of England in Saddleworth**

*“Celebrating God’s presence in all people.”*

[www.cofeinsaddleworth.org.uk](http://www.cofeinsaddleworth.org.uk)



# Pearson

FUNERAL SERVICE

## We take care of everything when you need us most

Our reputation has been built on trust and recommendation, we pride ourselves in giving the highest standard of service. We help and guide family members through difficult decisions and legal requirements.

Each funeral is tailored to the personal requirements of the family and carried out with dignity and respect.

PROPRIETOR – CLIVE J PEARSON Dip.FD, LMBFD, MBIE.

- LICENSED & QUALIFIED FUNERAL DIRECTORS
- SERVING ALL AREAS
- FAMILY OWNED & RUN SINCE 1920
- NAFD & SAIF APPROVED PREMISES



**Telephone 01457 243103**

Email [info@pearson-funerals.co.uk](mailto:info@pearson-funerals.co.uk)

**[www.pearson-funerals.co.uk](http://www.pearson-funerals.co.uk)**

PREPAID FUNERAL PLANS • ROLLS-ROYCE FLEET AVAILABLE • FUNERAL CATERING  
FLORAL TRIBUTES • MONUMENTAL MASONRY • 24 HOUR SERVICE

# The Rector writes...

## Forgiveness is the only way!

It is hard. It is often seen as weakness, or tolerance of the abhorrent. Sometimes it is misunderstood as condoning or excusing something that has been hugely destructive. The reality is that to forgive is immensely powerful for the forgiver. Without it you remain imprisoned; held captive as a victim. With it you are free to hold your head high; to smile; to accept that others are no more perfect than you are; that people are capable of perpetrating terrible injustice and cruelty, deliberately or through ignorance.

Wounds can run very deep. They can be an open sore; memories that are an ever-present reminder of what cannot be unsaid or undone. The damage can be profound and long lasting. When we are unable to forgive we can only ask God for his grace; to do what we cannot. Sometimes we can only wait and weep in darkness until we are strong enough to consider forgiveness as a way forward.

As we approach Lent maybe an intention to forgive may bring peace to some part of our life. Perhaps we will discover a healed relationship with our own selves. We may find relationships with others can also be repaired or changed. Wounds become scars; ever present but no longer festering and poisoning our lives.

### *Lord teach us to forgive as you forgive us.*

I find this prayer helpful:

#### *Requesting*

*O Lord, remember not only men and women of good will, but also those of ill will. But do not remember all the suffering they have inflicted on us; remember the fruits we have bought, thanks to this suffering: our comradeship, our loyalty, our humility, our courage, our generosity, the greatness of heart which has grown out of all this, and when they come to judgement let all the fruits which we have borne be their forgiveness!*

*Unknown prisoner in Ravensbrück concentration camp (20<sup>th</sup> Century).*

Sharon

## World Day of Prayer

*“Rise! Take your mat and walk”*

A service for everyone prepared  
by Christian women of Zimbabwe.

Friday 6<sup>th</sup> March at 7:30pm

at

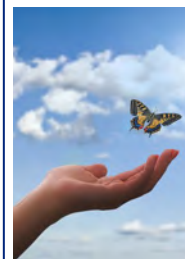
Sacred Heart Church, Uppermill

The service will be followed by refreshments



## Index

	Page
The Rector writes...	3
Regular Services	4
Ash Wednesday & Lent	5
Epiphany Questions?	6
OATIN - Part 2	6
Bright Futures School	7
Street Pastors	8
Age UK Oldham	9
Parish Registers	10
A view behind bars	11
A New Beginning	13
St Thomas Delph	14
Christ Church Denshaw	16
Holy Trinity Dobcross	18
Christ Church Friezland	20
St Mary Greenfield	22
St Anne Lydgate	24
St Chad - Parish Church	26
St Chad - Parish Centre	28
Wellsprings El Tular	29
St Chad - Kilngreen	30
Who's Who	34



This copyright-free image for the front cover was taken from an article entitled “Forgiveness: One’s Own Freedom” by Swati Singh, a freelance writer for a number of spiritual ezines including the “New York Spirit”.

# Regular Sunday Services

## St Thomas Delph

1<sup>st</sup> Sunday 8:00am Holy Communion (said)  
10:30am Service of the Word

2<sup>nd</sup> Sunday 9:30am Informal Service  
10:30am Holy Communion

3<sup>rd</sup> Sunday 8:00am Holy Communion (said)  
10:30am Service of the Word  
6:30pm Prayer for Healing  
with Holy Communion

4<sup>th</sup> Sunday 9:30am Informal Service  
10:30am Holy Communion

5<sup>th</sup> Sunday 8:00am Holy Communion (said)  
10:30am All Age Holy Communion

## Christ Church Denshaw

1<sup>st</sup> Sunday 10:30am Holy Communion (BCP)

2<sup>nd</sup> Sunday 10:30am Holy Communion (BCP)  
6:00pm Evensong (BCP)

3<sup>rd</sup> Sunday 10:30am Holy Communion (BCP)

4<sup>th</sup> Sunday 10:30am Morning Prayer  
6:00pm Evensong (BCP)

5<sup>th</sup> Sunday 10:30am Holy Communion (BCP)

## Holy Trinity Dobcross

1<sup>st</sup> Sunday 9:30am All Age Eucharist (CW)  
10:30am Holy Communion (BCP)

2<sup>nd</sup> Sunday 10:30am Morning Praise  
and Sunday School

3<sup>rd</sup> Sunday 9:30am Little Fishes  
10:30am Eucharist (CW)

4<sup>th</sup> Sunday 10:30am Family Eucharist (CW)

5<sup>th</sup> Sunday 10:30am Morning Prayer (BCP)

## Christ Church Friezland

1<sup>st</sup> Sunday 9:30am Eucharist (CW)

2<sup>nd</sup> Sunday 9:30am Children's Eucharist (CW)

3<sup>rd</sup> Sunday 9:30am Morning Prayer

4<sup>th</sup> Sunday 9:30am Eucharist (CW)

5<sup>th</sup> Sunday 9:30am Eucharist (CW)

## St Mary Greenfield

1<sup>st</sup> Sunday 9:00am Early Church ¥  
10:30am Eucharist (CW)

2<sup>nd</sup> Sunday 9:00am Early Church ¥  
10:30am Morning Prayer (CW)

3<sup>rd</sup> Sunday 9:00am Early Church ¥  
10:30am Eucharist (CW)

4<sup>th</sup> Sunday 9:00am Early Church ¥  
10:30am Eucharist (CW)

5<sup>th</sup> Sunday 9:00am Early Church ¥  
10:30am Eucharist (CW)  
6:30pm Eucharist

¥ 'Early Church' for children and young families.  
On special occasions (e.g. Mothering Sunday,  
Easter Day, Harvest, Christingle, Nativity, etc.)  
we have just one service at 10:30am.

## St Anne Lydgate

1<sup>st</sup> Sunday 8:00am Holy Communion  
11:00am Children's Eucharist (CW)  
(including Church Parade)

2<sup>nd</sup> Sunday 8:00am Holy Communion  
11:00am Eucharist (CW)

3<sup>rd</sup> Sunday 8:00am Holy Communion  
11:00am Morning Prayer

4<sup>th</sup> Sunday 8:00am Holy Communion  
11:00am Eucharist (CW)

5<sup>th</sup> Sunday 8:00am Holy Communion  
11:00am Eucharist (CW)



Once all villagers decided to pray for rain.  
On the day of prayer, all the people gathered, but only one boy came with an umbrella.

**That is faith!**

## St Chad Saddleworth

On the 5th Sunday all three of the worship centres worship together. The venue is rotated.

29<sup>th</sup> Mar 9:30am Eucharist at Kilngreen

## St Chad Saddleworth - Parish Centre

1<sup>st</sup> Sunday 9:30am Children's Eucharist

2<sup>nd</sup> Sunday 9:30am Eucharist and Sunday School

3<sup>rd</sup> Sunday 9:30am Eucharist and Sunday School

4<sup>th</sup> Sunday 9:30am Morning Prayer and Sunday School

## St Chad Saddleworth - Parish Church

1<sup>st</sup> Sunday 11:00am Sung Eucharist

2<sup>nd</sup> Sunday 11:00am Sung Eucharist

3<sup>rd</sup> Sunday 11:00am Sung Eucharist

4<sup>th</sup> Sunday 11:00am Morning Prayer

## St Chad Saddleworth - Kilngreen

1<sup>st</sup> Sunday 9:30am Family Worship

2<sup>nd</sup> Sunday 9:30am Eucharist and Sunday School

3<sup>rd</sup> Sunday 9:30am Eucharist and Sunday School

4<sup>th</sup> Sunday 9:30am Eucharist and Sunday School

# Regular Weekday Services

## Christ Church Friezland

Tuesday 9:30am Eucharist (CW)

Thursday 7:00pm Eucharist (CW)  
non-alcoholic wine

## St Anne Lydgate

Wednesday 6:00pm Family Worship

Friday 10:00am Eucharist (CW)

## St Mary Greenfield

Wednesday 10:00am Eucharist (BCP)

## St Chad Saddleworth - Parish Centre

Tuesday 9:30am Eucharist

# Ash Wednesday & Lent

## Ash Wednesday Worship

On Ash Wednesday 26<sup>th</sup> February at 7:30pm, the benefice worships together at St Anne's Church Lydgate on the first day of Lent. Join us at this reflective Eucharist where we undertake the 'Imposition of Ashes'.

## Lent Courses

The Churches Together in Saddleworth Lent Course sessions will be based on 'Building the Rock: Faith, doubt – and Jesus'. The sessions will run for five weeks, starting during the week beginning Sunday 1<sup>st</sup> March, and will be held as follows:

Tuesday 1:30pm to 3:00pm

Wednesday 8:00pm to 9:30pm

Thursday 1:30pm to 3:00pm

Thursday 7:30pm to 9:00pm

Greenfield Methodist Church

St Anne's Church Lydgate

Delph Methodist Church

The Sacred Heart Centre, Uppermill

Please feel free to visit any venue, depending on diary engagements, as the same topic will be covered each week in all the venues.



# Epiphany Questions?

Revd Angela Bryan raised the question in her sermon on Epiphany Sunday:

***“What was the best gift we gave this Christmas and what is important in our Christian life?”***

Both were easy questions for me to answer.



For the best gift? I gave Traidcraft aprons celebrating 40 years since it was founded in 1979. These I gave to my son and to my grandson who both cook but more relevantly in recognition of my Elizabeth's 30 years involvement with Traidcraft; in case you do not know, my wife Elizabeth died in July 2014.



I answered 'Fellowship' for the second question on 'what is important in my Christian life', which I experience here at St Anne's Church and at church gatherings in Saddleworth.

I also experience 'Fellowship' when I go on holiday with the Holiday Fellowship organisation. I can go to any of their holidays knowing that I will feel welcome and at home straightaway.



For instance I spent a thoroughly enjoyable Christmas week with 25 complete strangers and we were a happy family within hours. The only down side is feeling a bit flat when one gets back especially in the lull between Christmas and New Year. This was relieved on Saturday 4<sup>th</sup> January with Roger Gould's 80 year birthday gathering at the Civic Hall followed by the fellowship at the Epiphany service led by Angela. Both perked me up no end. I even had good trade at the Traidcraft stall!

I join others in wishing Angela well in her new life as a vicar in Stoke-on-Trent along with Alison.

Richard Darlington

# OATIN - 'Making a Difference' - Part 2

The head teachers at the link schools, Omungolyo and Malangu, identified problems of increasing rural poverty. There is no longer a school feeding programme due to the prolonged drought. Government drought relief is not scheduled to begin until late August!

Health education programmes, supported by UNICEF, have been withdrawn so there is no 'specialist' support for HIV positive children. These factors identified the need to continue to: provide food for vulnerable families, funds for school uniforms, and address vocational skills training for older students.



A morning spent on home visits to 'Ombome Oto' clients revealed the difficulties faced by volunteers who walk many kilometres carrying food parcels, delivering medicines and supporting families. This is all done with resilience, good humour, and care and consideration for the needs of their clients; they are truly deserving of our continuing support.

Throughout the visit we had talks with Father Samuel Skaxukuena, who was appointed to the Oshandi parishes in 2017. At a meeting with the PCC and Father Samuel, the need to develop a closer working relationship between the Ombome Oto project, the Oshandi communities, and the Church communities of the Holy Spirit and St Chad Saddleworth was identified. We agreed to develop a 'Memorandum of Understanding' to clarify and confirm the roles and responsibilities of the Trust and the church bodies.

As ever, we left Oshandi with increased respect for the Ombome Oto volunteers and for the Oshandi community who continue to care for one another. May we, in Saddleworth, continue to 'Go and do likewise'.



*If you would like to support OATIN please contact Liz - 01457 810666,  
Sarah - 01457 875126, or Ann - 01457 874423.*

Oshandi AIDS Trust in Namibia is a Registered Charity (No. 1098669)

# Bright Futures School - An Update

Back in Issue 1 of The Grapevine we featured 'Bright Futures School for children with autism'. At that time, December 2017, the school was based in a house in Grasscroft.

Since then quite a lot has happened and their website explains:

*"In November 2018, we moved to our current premises in Greenacres and we are now in the planning stages of developing our very own, purpose built school in Greenfield, with the support and backing of local firm Robert Scott. We hope to be in these new premises in the spring term 2020."*

Their December 2019 newsletter gives the following update:

## **"New School Update**

*Builders, Medlock FRB Construction, broke ground to begin work on the new school in Greenfield on 19<sup>th</sup> August 2019. Since then, the build has been going at a steady pace, to the point where the steel frame is now up, the walls are mostly built and the roof is on!*



*We are visiting the site on the last day of term – Friday 20<sup>th</sup> December 2019 – and can't wait to see how our brand new school is looking!*

*If all goes according to plan, we should be able to move in during February half term! Exciting times!"*

Currently, the Friends of Bright Futures School is raising funds to provide equipment and facilities for the new school. The following text is extracted from a press release on 19<sup>th</sup> December.

*"Christmas Open Afternoon at Bright Futures School for children with autism raises £305 for new school in Greenfield.*

*Pupils and staff at Bright Futures School for children with autism in Greenacres, Oldham, welcomed parents, family, friends and supporters to their annual fundraising Christmas Open Afternoon yesterday, to help raise money for the new school currently being built in Greenfield, Saddleworth. Together, we raised a fantastic total of £305...*

*... which will go towards the fundraising pot for kitting out the brand new state-of-the-art Bright Futures school in Greenfield."*

If you are interested in supporting Bright Futures School through Friends of Bright Futures School, please use the QR code or visit their 'gofundme' page to make an on-line donation.



Alternatively, please email the school office on [office@brightfutureschool.co.uk](mailto:office@brightfutureschool.co.uk)



## Advertise in The Grapevine

Bi-monthly production of 900+ copies, full colour A4 pages, distributed throughout Saddleworth.

The bi-monthly fees per issue are: A4 full page £110, ½ page £55, ⅓ page £40, ¼ page £30, ⅙ page £25, ⅛ page £20.

**Closing date for the next issue (Issue 15) is Thursday 5<sup>th</sup> March 2020.**

**For further information contact Sue Willett on [grapevineadvertising@cofeinsaddleworth.org.uk](mailto:grapevineadvertising@cofeinsaddleworth.org.uk)**



We have encountered friendly and encouraging responses from people we have met. It has been a challenging time for me as we are being asked what we are doing and why. I have been reminded of the verse in the Bible:

*“Always be prepared to give an answer to everyone who asks you to give the reason for the hope that you have.”*

*(1 Peter 3 v.15 NIV)*

The reflections on the Anglican website about “FollowingTheStar” seem relevant to our Street Pastor team and where we are at. In fact, where I am at starting on this new venture.

The Wise Men following Jesus started on their journey not knowing what the journey was going to be; they took a few steps to “FollowTheStar”. We do not have to see the end of the journey, just take one step at a time. Faith is about taking steps and journeying with God, trusting He is with us even if we are not sure.

There is to be a Street Pastor graduation service on Thursday 23<sup>rd</sup> April at 7:30pm at Sacred Heart Church, Uppermill. Those who have gone through the training this year will be graduating and there will be a commissioning of the Saddleworth Street Pastor team.

Please come along and give us your support.

Joyce Brown

I can recall that at least ten years ago we had a speaker from Street Pastors to come and share experiences with us at a Churches Together in Saddleworth meeting. We were curious about what was being done in Oldham; that’s as far as it went.



Now we have enough volunteers to cover one shift on a Friday evening in Uppermill. It has been and continues to be a learning curve. We are still experimenting with different start and finishing times. We are getting to

know the local pub and café owners as well as the security guards; we have been noticed!

## Dementia Support in Saddleworth

### Are there any support groups in Saddleworth?

The Saddleworth Carers Group is available to those with memory problems and their carers. The group meets on the 2<sup>nd</sup> and 4<sup>th</sup> Friday of each month from 10:00am to 12:30pm in Sacred Heart Church Hall. T: 01457 810614

### What initiatives have been undertaken locally to support people with dementia and their carers?

Over the past few years the local community including the churches have been involved in the Alzheimer's Society's Dementia Friends programme, helping to change people's perception of dementia and learning how to help. The key messages include:

- † dementia is not a natural part of ageing, it is caused by diseases of the brain,
- † it is not just about losing your memory; it can affect communication, motor skills, changes in inhibition;
- † it is possible to live well with dementia and there is more to the person than the dementia.

Dementia awareness sessions were (and still are) made available and a number of local shops in Uppermill signed up to become dementia friendly; look for the forget me not sign on the window. We have a dementia advocate within each Saddleworth Anglican church. Support of the person with dementia and their carer is important as well as making it easier by visual signage (especially the toilet area). In 2016 the virtual dementia tour came to Saddleworth and 72 people received training on what dementia could be like.



Joyce Brown



## Information and Support

We offer a range of information & support including explaining the dementia diagnosis pathway, living with dementia, care options, financial matters and much more.

Finding out that you or someone you care for has memory problems or has been diagnosed with dementia can be a very anxious time. At this time you may be in need of additional support and reassurance. We can help you to find out about services locally and nationally. By listening to what you have to say, we can give you access to a range of useful resources that can support you and also help you to plan for the future.



We can help you with:

- one-to-one emotional support for you or those for whom you care;
- support for the person living with dementia to access social groups or activities;
- information regarding diagnosis;
- completing a Carer's Assessment;
- access to a Carer's Emergency Card;
- determining if you are eligible to apply for a Carer's Personal Budget;
- advice on care options / services;
- advice on equipment within the home;
- advice regarding Lasting Power of Attorney;
- information on planning for the future;
- information on living well and keeping active;
- information regarding peer support groups;
- information on training opportunities;
- information on financial support available;
- useful contacts.

## Carer's Assessment Service

Emotional and practical support for carers of those living with dementia. All carers are entitled to their own assessment to ensure that they are looking after their own health and wellbeing and to help them to carry on with their caring role.

If you are caring for someone with memory loss or dementia, we can complete a Carer's Assessment and, if you are eligible, apply for a Carer's Personal Budget. This will help you to have some time out from your caring role or to alleviate some of the stresses that can arise when caring for someone.

Caring for someone covers many different aspects:

- helping with their washing, dressing or eating;
- accompanying the person to appointments;
- and offering support when they are anxious.

Carers are entitled to an assessment to find out if they are eligible for support to help them to carry on their caring role whilst looking after their own well-being. Carers can be eligible for support whether or not the adult whom they are caring for is receiving any help or support from social services or if they are in receipt of Carers Allowance.



If you would like to discuss your situation in more detail or require individual support, make an appointment with:

**Donna Atherton**  
**Project Co-ordinator**  
**t: 0161 622 9309 / 9312**  
 (Monday to Friday 9:00am to 4:30pm)  
**e: [donna.atherton@ageukoldham.org.uk](mailto:donna.atherton@ageukoldham.org.uk)**  
**[www.ageukoldham.org.uk](http://www.ageukoldham.org.uk)**

# Parish Registers

## Holy Baptism

### Christ Church Denshaw

7<sup>th</sup> November Brenda Young

### Holy Trinity Dobcross

14<sup>th</sup> December Elliott Thomas and  
Mary Joan Tarbuck

### Christ Church Friezland

24<sup>th</sup> November Oscar Parker

### St Mary Greenfield

17<sup>th</sup> November Alfie Robert Benjamin Newark  
24<sup>th</sup> November Noah Daniel Allen  
15<sup>th</sup> December Boaz Leo Pollard

### St Anne Lydgate

10<sup>th</sup> November Oscar and Alexander Moore  
24<sup>th</sup> November Tyler John Sutherland  
14<sup>th</sup> December Holly Claire Firth  
15<sup>th</sup> December Mitchell James McGarty

### St Chad Saddleworth

17<sup>th</sup> November Harry James Akalin

*May they walk in the light of Christ*



## Funerals

### Holy Trinity Dobcross

16<sup>th</sup> December Margaret Grainger  
10<sup>th</sup> January Mary Isherwood

### St Mary Greenfield

21<sup>st</sup> November Kenneth Wood  
18<sup>th</sup> December Arthur Charles William Burgess

### St Anne Lydgate

1<sup>st</sup> November Robert Wood  
3<sup>rd</sup> January Lydia Jones

### St Chad Saddleworth

1<sup>st</sup> November Alan Daws  
3<sup>rd</sup> January Steven Bradford

*Commended to God's love and mercy*

## Marriages



### Holy Trinity Dobcross

23<sup>rd</sup> November Gareth Paul Travis and  
Rebecca Victoria Wallis

### St Mary Greenfield

2<sup>nd</sup> November Andrew Allan Childs and  
Emily Ruth Knowles

### St Anne Lydgate

22<sup>nd</sup> December James Higginsin and  
Michelle Beesley

*To love and to cherish*

# A view behind bars - 'The Great Deceit'



It was just another morning staff briefing, full of details about how many men would be unlocked today, how many were being escorted to other prisons, Crown Court, hospital, funeral. There was the usual information about the two prisoners who have a 'do not resuscitate' order in the event of serious illness as a personal request due to their age and current symptoms.

Then we reached the log of significant events of the last twenty-four hours. Amidst the record of three rugby-ball sized parcels lobbed over into the garden from behind the perimeter fence (retrieved and sent for analysis but probably containing mobile phones, chargers and drugs), and the sink pipe pulled off the cell wall in frustration by one prisoner, there was also the detail about the hand-made knife, formed from a razor blade and elastic-wrapped handle, secreted under the gauze of the snooker table.

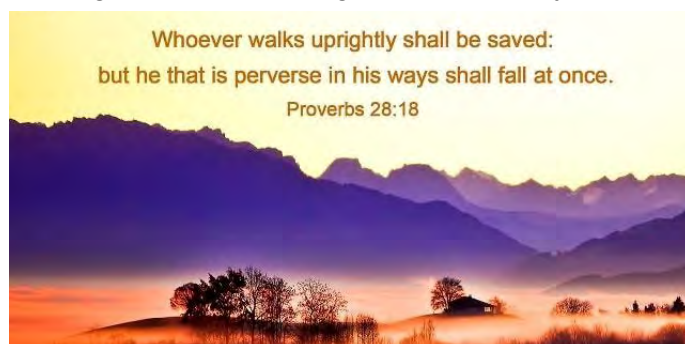
I recently preached on a Bible passage which says  
*"in those days evil men will go from bad to worse, deceiving and being deceived..."*  
(2 Timothy 3 v.13)

Deception is a trait both learnt and never learnt in prison. It has been never learnt by some who have been the gullible accomplices of crimes and who now wait their lives away because they trusted someone who shouldn't have been trusted. Perhaps they will now (sadly) be less naïve and more canny and cynical in the future.

Deception is an art learnt and perfected by those whose minds continually dream up schemes to gain power. For some, there is a genuine fear that they must protect themselves. If they have caused trouble in some way, it may, soon enough, rebound on them. Weapons improvised from cans of beans launched in a sock are not exactly subtle. A slimline blade in an elastic handle is less obvious.

The attempts to smoke nicotine and pretend it was merely tea leaves, or to smoke 'spice' and think that the scent won't make it obvious, are the slightly more desperate attempts to cover up activity.

One man I tried to help, had claimed that his sister had died. Myself and a senior officer went about the usual checks to try to clarify details and perhaps help him towards going to his sister's funeral. He told me, with plausible expressions and quivering lips, about what his sister had meant to him. I listened sympathetically. Something didn't ring true. In a blatant act of lying, we discovered that his story was a fabrication, presumably for the small pleasure of knowing he had got several staff running around and taking up time on a myth.



Yet amidst these darker sides to deceit there have been two instances this week that have given hope.

The first was the unfakeable, genuine, big smile of the big man whose job is nothing more remarkable than the potwash in the staff canteen. Usually the men in that workplace move round to other stations every couple of weeks. Des has been breaking his back over the sink there for well over a month. "I love it!" he said, without a trace of the lie in his voice, "And they seem to think I do it well, so I reckon I'll be doing this for a while". He then added, after asking me how I was, "Your job is really important, Miss. So we need to look after people like you". The simplicity of a servant-heart, happy to wash the pots so other people can get on with other things. It's a rare gift that he has found.

The second event was a meeting with a man who announced he had "...started to rediscover my faith in God". I asked him what had made him lose faith and then help him begin to find God again. He told me how, when things had begun to go wrong he had blamed God for it all. Now he had come to realise that he had been kidding himself. He needed to look at his life and see that it was him who had taken the drugs that led to crime and upset with his family. He alone was responsible.

Self-deception was finally beginning to be taken over by clear-thinking.

**Hilary Edgerton**  
**HMP Buckley Hall, Rochdale**

northainley  
SOLICITORS

## Will & Probate Specialists

Our team of specialist lawyers pride themselves on their caring, compassionate and professional approach.

- ❖ Wills, Tax & Trusts
- ❖ Probate Services
- ❖ Estate Administration
- ❖ Care Home Planning
- ❖ Foreign Wills, Assets & Domicile
- ❖ Lasting Powers of Attorney & Deputyships

Home visits available

34/36 Clegg Street, Oldham, OL1 1PS

T: 0161 624 5614

E: [info@northainley.co.uk](mailto:info@northainley.co.uk)

W: [www.northainley.co.uk](http://www.northainley.co.uk)

POGSON & ARMITAGE  
Est. 1930 LTD

53 Huddersfield Road,  
Diggle, OL3 5NT  
Tel.: 01457 872149

FUNERAL  
DIRECTORS

Pre-paid Plans

Private Chapels of Rest

Personal Attention  
Day or Night

G. BARLOW  
Est. 1868 & SONS LTD

17/19 Union Street West,  
Oldham, OL8 1DQ  
Tel.: 0161 624 4301



Authorised Distributor

# UTILITY WAREHOUSE

## The Discount Club



Become a member of Utility Warehouse and SAVE on your gas, electric, telephone, broadband, mobiles & home insurance.

Use a single supplier for all your utilities and get award-winning customer service with value that's unbeatable.

It's easy to switch and cashback card available.

Go to [www.suewillett.co.uk](http://www.suewillett.co.uk) and start to SAVE.

Business customers: [www.suewillett4biz.co.uk](http://www.suewillett4biz.co.uk)

Also earn money with our business opportunity:

[www.whocandoit.co.uk](http://www.whocandoit.co.uk)

Contact Sue Willett on: 0161 425 7909

07808 474743

[sue@suewillett.co.uk](mailto:sue@suewillett.co.uk)



WRIGLEY CLAYDON  
SOLICITORS SINCE 1795

10% Donation  
to Church of England  
in Saddleworth Churches



Wrigley Claydon will donate to your chosen church, 10% of any fee you pay should you choose to use them for your legal services. (Quote: COFE)  
(Excludes VAT, disbursements and legal aid)

- |              |                             |
|--------------|-----------------------------|
| ✓ Wills      | ✓ Lasting Power of Attorney |
| ✓ Probate    | ✓ Conveyancing              |
| ✓ Family     | ✓ Suing or being Sued       |
| ✓ Company    | ✓ Commercial Property       |
| ✓ Employment | ✓ Debt Recovery             |
| ✓ Accidents  |                             |

Contact Rachel Damianou or Vijay Srivastava  
Call: 0161 624 6811 or email: [rld@wrigleyclaydon.com](mailto:rld@wrigleyclaydon.com)  
29/33 Union Street, Oldham, OL1 1HH  
[www.wrigleyclaydon.com](http://www.wrigleyclaydon.com)



WrigleyClaydonSolicitors



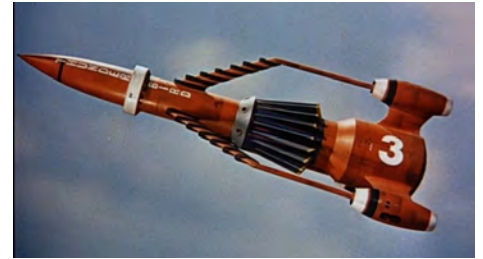
@wrigleyclaydon

Authorised and regulated by Solicitors Authority No. 60083 & 60084

# A New Beginning by Godfrey

***“I know what I am planning for you”*** says the Lord  
***“I have good plans for you, not plans to hurt you. I will give you hope and a good future”.***

I recently read an article that really made me smile. It was about a creative and resourceful chap called Brian. Brian applied his carpentry skills to convert his mobility scooter into a Batmobile to raise money for charity. He found that he liked it so much that he kept it that way and now he makes people smile as he heads out to the local shops. Brian now has an idea for his next project... to turn a mobility scooter into a **Thunderbirds** rocket! It will be great to see it.



We can approach retirement in many different ways, but Brian reminds us that we can approach it creatively, joyously and whole heartedly. Retirement can offer a new beginning, the chance to tackle new projects. The extra time gives us an opportunity to develop new skills. Henry Ford, once said *“anyone who stops learning is old, whether they are 20 or eighty”*. I still have a plan to visit the Sami people... and develop my painting skills. There is a world of adventure and challenges waiting.

In his senior years, Noah listened to God and built a truly magnificent ark. He was an awesome 600 years old on the day his vast boat started to float. Abraham set out with Sarah for the promised land when he was 75 and was an incredible 100 years old when his son Isaac was born. Hmm... perhaps I should go beyond learning about painting?

One or two of my friends have used their retirement to tackle a special God-given project. One works as a volunteer at the Booth Centre in Manchester. Another, used to work with a charity that printed Bibles in Russian and he would, with a companion, take these in a van into Russia to pass on.

There is no such thing as “too old”. God still has plenty of exciting projects lined up for his children, both home and abroad. Now there’s an exciting prospect!

**Lord you created me and gave me all my skills and interests.  
Please use the things I am good at to do something special for you.  
And maybe help me to work on the things I am I’m not so good at, too!**

*“There is a fountain of youth: it is your mind, your talents, the creativity you bring to your life and the lives of the people you love. When you learn to tap this source, you will have truly defeated age.”*

Sophia Loren

This article was inspired by the book: *“What did I come upstairs for?”* by Judith Merrell and Anna Caddy. The Bible quote is from the Youth Bible.

## A message from Reverend Jenny Degg, retired priest within the Benefice of Saddleworth.

*“A couple of months ago I had a big birthday. It was a very memorable event for me and I was so thrilled and touched by the kindness of friends and neighbours. It led me to think that if people are so loving and kind, how much more so is our Heavenly Father.*

*“My life has been one of moving, as an Army child to strange countries, and then as an adult into teaching and the mission field. I think the best move I made was to move to Manchester. I joined St. Margaret’s, Burnage which was a culture shock to a very new Christian, but the best place I could have been.*

*“It seems to me that life is full of callings to be part of a special group, family, work, church. God calls us to do things we never expected and what we need to be his chosen one in the place in which he puts us. A call to the priesthood was the last thing I expected. When I retired I thought I’d have a quiet life!*

*“The ‘still small voice’ kept nudging me... ‘ask X what they think’, ‘make contact with Y’, and finally, ‘Go to college for 2 years in my sixties’. God calls us all to be his person. When I reflect on my life there were times when life was tough and times when it was exciting. There were days and weeks when nothing seemed to go right, and others filled with joy.*

*“That’s life and I’ve found out that no matter where you are at any particular moment or what you feel, the God who loves us unconditionally never changes.”*

# St Thomas Delph



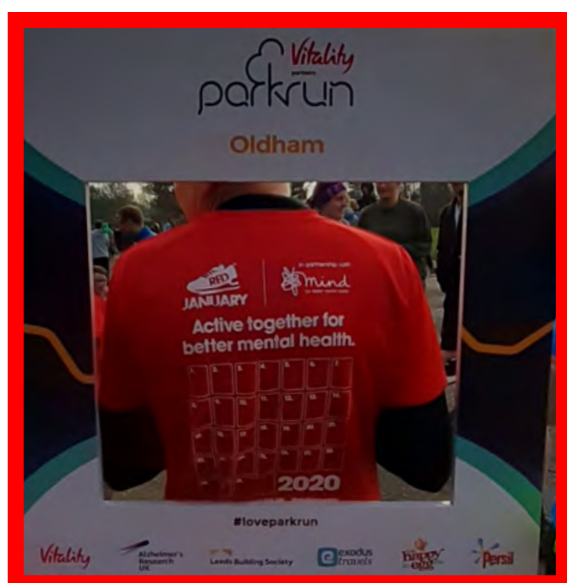
Through its contacts with MIND, a mental health charity, St Thomas' church supports 'RED January' by laying on some activities to support people getting through January.

On the MIND website they ask 'Why January?' and suggest that:

- † Expensive Christmas? **RED** is free to take part.
- † **RED** provides a goal and focus to help you through a characteristically tough month.
- † People can feel isolated and pressured to achieve New Year's resolutions. **RED** is a no pressure movement fuelled by community spirit.
- † **RED** empowers, educates and supports people to start the year as they mean to go on, forming healthy habits to continue beyond January.

Whether you were planning on swimming lengths, walking 10 minutes a day, or running 100 miles in the month, **RED** promoted a flexible exercise schedule that celebrated every achievement, no matter how large or small.

As a church we set up a programme encouraging people to do something. Although some of the activities were run by others, we advertised them. e.g. Saturday 9:00am Oldham Park Run and the Delph Striders Wednesday evening running group.



Other activities that we organised included individual Prayer Walk in Delph with leaflets available from church and in the library, guided short walks, use of the Youth Drop In table tennis, snooker and table football equipment, seated exercise and litter picks.

Being part of the Eco-church project we also encouraged people in walking all or part way to church!

Want to know more about **RED** January?

Visit: [www.togmind.org/red-january](http://www.togmind.org/red-january).



The first event we advertised was the Oldham Park Run at 10:30am on New Year's Day. Some of us that turned out were full of cold but still taking part. The route is 3 times around the park and on this particular day instead of the usual 150-200 runners there was well over 400 people participating.

Within the runners we identified people from the church and some with good links to the church. It's a great feeling to be out exercising with other people and perhaps something we as churches should be encouraging more throughout the year.



Ben and Emily Harvey with family

**Red January – as you go to press!**

**Jacqui Rosedale:** I did a park run on the 1<sup>st</sup> but I've been proper poorly since.

I am hoping to go on a little walk soon to get some fresh air.



John and Jacqui with friends

**Rick Taylor and family:** We went to parkrun on 1<sup>st</sup>, the kids went cycling on 2<sup>nd</sup>, netball session on 3<sup>rd</sup>, planning on swimming on 4<sup>th</sup>, junior parkrun on 5<sup>th</sup>,...



John and Katie Anchor with three of their young men

**Joyce Brown:** I have walked into Uppermill each day but that is usual for me, Intend walking to church on Sunday and this coming week will be back to doing yoga and aquacise

**Jen Weir:** Megan (Year 7) and I have joined Saddleworth gym (Megan's planning to join in the Manchester junior 2.5km run as part of her leadership award and I need some motivation).

We both walked to Uppermill yesterday and I went for a walk / jog on 2<sup>nd</sup>. The jogging part lasted all of 100 metres but it's a start.

**Geoff Dent:** Trying to get in a longer walks each day. Failed today (3<sup>rd</sup>) as daughter required DIY assistance.

**Jonathan and Anne Wright:** We try to have a daily walk of about 2 miles sometimes more, sometimes less. We have done well this week, Lark Hill yesterday (2<sup>nd</sup>) and Castleshaw today.

**Vicky Broadbent:** Zoe and I are doing daily step challenges.

**John Rosedale:** Park run on the 1<sup>st</sup> and 4<sup>th</sup>, a walk on the 2<sup>nd</sup> and a gentle jog on the 3<sup>rd</sup>. The picture below is John and a friend Helen who is also supporting MIND RED January preparing for the St Thomas gentle jog. We did just over 2 miles by running along the river to Pingle Mill, 4 circuits between the mill and the park before returning to the church.



Richard and Lucy with the sun in their eyes



A gentle jog

## Parish Contacts

Grapevine Coordinator	Geoff Dent	geoffreydent@btinternet.com	01457 874027
Church Hall Bookings	Alison Lambert		01457 875141

# Christ Church Denshaw

## Christmas Lights

Although Christmas is now long gone, we couldn't let this edition pass without a mention of the Christmas lights. We began lighting the church and surrounds in 2017 to make its presence shine out for Christmas and joined the rest of the village at the main 'Switch On'.



Last year we had a few more lights and following the lead of the Diocese, made our theme '#FollowTheStar'. Two stars were made by a member of the congregation, one for the lychgate and the other on the outside of the porch so that worshippers followed one star to the next which led them into church. The stars were kept in position for the whole year as a sign of welcome.



This year the idea was expanded once again and the frontage and west end of the church outlined in white lights, while many of the trees in the churchyard were suitably adorned with tiny twinkling lights.

The whole effect, including the spotlight on the crib (also produced by members of the congregation), we thought was stunning and we like to think helped the judges from the Parish Council decide that Denshaw was the best-lit village in Saddleworth in 2019.

## Christmas at Christ Church School

This Christmas at school I have enjoyed learning about Mary and Joseph and the long journey they went on. Our teachers, Mrs Lees and Mrs Mudd, showed us what happened in the story by acting it out with some figures. Mrs Lees acted the story out whilst Mrs Mudd read the story.

At our school Carol Service, we sang lots of different songs about Christmas, such as, 'This Christmas Time', 'We Three Kings' and many more. The brass players were amazing; they did really well. There were children reading the story and sharing their work with everyone.

I also took part in the short play 'The Little Christmas Star' put on by Sunday School members during the Church Carol Service, I think everyone enjoyed it, especially the big star held up at the front.

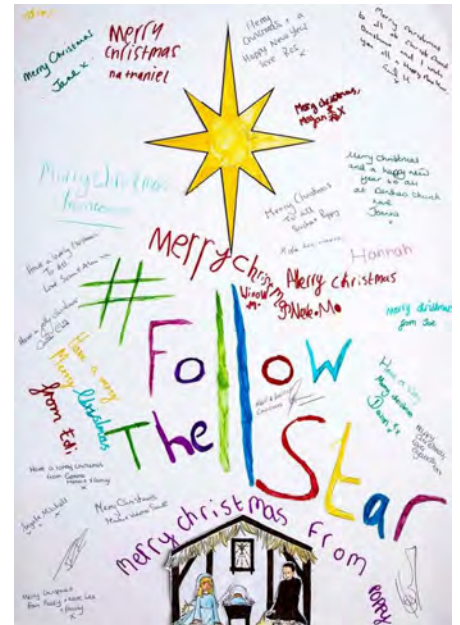
I love Christmas because it is a time for family. It is a time for love and sharing.

Neve Mallard

Aged 10 years - Year 6 Christ Church School

## Sunday School Eco-Effort

To illustrate the importance of being Eco-friendly, this year the children of our Sunday School used one large card to send Christmas wishes to friends in church rather than one card for each. The card was signed by all the children and we were pleased to see several of the parents joined in as well as the teachers. In line with many other churches in the Diocese of Manchester, the symbol of '#FollowTheStar' was used for the theme.



**Well done to all our children and their teachers.**



## Remembering

### Revd Sydney Clayton MA BD

There will still be many in Saddleworth who remember the last incumbent of the Parish of Christ Church Denshaw, Reverend Sydney Clayton. For this reason Christ Church Denshaw was the last parish to join the Benefice of Saddleworth.



Revd Sydney Clayton was an Oxford Scholar and classicist, who passed away in March 2015. Not only was he the last incumbent, but a man dearly loved by all in the village, members of the

congregation and those who rarely worshipped in the church. He had been a friend to all for over thirty years of ministry in the village. He was also Chair of Governors at Christ Church School for many years until failing health caused him to step down to vice-chair and eventually reluctantly, retire from the post. Along with his successor as chair, Bob Rodgers, he received an award from Oldham Council 'For distinguished service of over thirty years as a school governor.'

After his death it was agreed that it was only right that a memorial should be placed alongside those of other notable incumbents on the south interior wall of the church. It has taken almost four years to go through all the correct channels to get the necessary permission and have suitable wording approved by the Diocese and a design to complement the existing tablets. Anyone who has the task of applying for a faculty for anything of this nature will appreciate the time and effort that has been put into this task by our churchwarden, Ros; we all owe her a big 'Thank you'.

Everything is now in hand and ready to be installed and dedicated by Bishop Mark Davies on 1<sup>st</sup> March appropriately the Sunday nearest the anniversary of his death. Sydney Clayton will be long remembered in Denshaw; his legend lives on and his wise words (often humorous) are frequently quoted by those who remember him best.

We are all certain he would be very proud to see this memorial erected and for his friend Bishop Mark Davies to be present to dedicate it.

### Revd Philip Williamson

On Sunday 12<sup>th</sup> January Christ Church held a very special service of Holy Communion, when they welcomed Bishop Mark Davies to license Revd Philip Williamson as 'Assistant Curate in the Saddleworth Team of Churches'. Some lovely hymns were chosen for the occasion by Philip and his partner Alan and all were well-known to the congregation. We enjoyed some great singing during Dear Lord and Father of Mankind, Lord for the Years, All My Hope on God is Founded, How Great Thou Art, and Be Still for the Presence of the Lord during Holy Communion.

It was a lovely service and we are delighted to say that Philip will continue to be a regular celebrant at Denshaw.

### Looking forward

We have already two events organised at Christ Church, both of which we know will be very enjoyable socially and also make some much needed money to go towards the ongoing repairs.

The first is a **Spring Ball** to be held at Denshaw Village Hall on Saturday 25<sup>th</sup> April for which tickets will soon be available.



Secondly, looking almost a year ahead (but it will soon come round!), **Black Dyke Band** will hold a concert on Saturday 21<sup>st</sup> November. Alison Childs has kindly offered to take the organisation of the event in hand once again. Details will be announced on our Twitter page, Newsletter and The Grapevine when Alison will be starting to take ticket requests. A wonderful opportunity for our church and indeed our local community to be able to hear this world famous band in our own village. Grateful thanks once again to the Childs family.

---

## Parish Contacts

Grapevine Coordinator

Mary Rodgers

rodgers@delphman.myzen.co.uk

01457 874354

# Holy Trinity Dobcross

## A Village Wedding for Becky Wallis and Gareth Travis.

A grey, wet November afternoon became a day to remember in Dobcross as Becky and Gareth celebrated their wedding in the church where the bride sings in the choir. Everyone in the village was invited to the service which was conducted by Revd John Rosedale.



Becky explained that it was a real DIY wedding with all the personal elements chosen for a specific reason and carried out by family and friends. The church was full, the bride and flower girls looked lovely and a variety of music was enjoyed, which included hymns, piano, choir, clarinet and brass.

Congratulations to Becky and Gareth from everyone at church and the Dobcross Community.

## How we #FollowedTheStar

We again embraced the Church of England's Christmas Campaign #FollowTheStar. The upper windows displayed a new star each week during Advent plus a fifth for Christmas Day. In all, five stars shone from Christmas to Epiphany enhancing our nativity scene by the church gate.



## Thank you to everyone

Our thanks to all the people who helped with services, events, preparing church, lovely flower arrangements, donating and decorating the tree and contributing to the hundred and one jobs of church life.

All this help makes the Craft Fair, the Christingle service, Sing for Pleasure Concert, Nativity Pop-Up service and the wonderful Festival of Nine Lessons and Carols, such happy and meaningful occasions for congregation, school and community.

Our strong ties with the music traditions of the village continue with Dobcross Youth Band contributing to the Christingle service and Dobcross Silver Band supporting our music at the Festival of Nine Lessons and Carols.

Our Christmas present for the Midnight Eucharist appeared as a quartet of brass players from four different bands from Saddleworth and beyond. Thank you for supporting our singing and heralding the arrival of Christmas with 'Hail Smiling Morn'.



## Charity Donations during Autumn

WaterAid Harvest Appeal	£100
The Children's Society	£451.83
Dobcross Youth Band	£107
Royal British Legion	£107
Dr Kershaw's Hospice	£20
Bright Futures School	£250

## Our Christmas Charity is Bright Futures School, Greenfield

At the end of each year we make a donation to a charity, usually one suggested by the PCC or congregation. This year it was decided to support Bright Futures, a school in Saddleworth specialising in education for children on the autistic spectrum. Currently the school is in temporary premises until a new building is completed in Greenfield.

The Friends of Bright Futures have been raising funds to buy essential equipment for the new school and are now appealing for money to secure white goods, such as a dishwasher, two fridges, electric oven and hob etc.



From left to right: Zoe Thompson, Proprietor and Head of Development at Bright Futures School (BFS) with Paul Wooding of Holy Trinity Dobcross, pupil Sahil, Revd Canon Sharon Jones of Benefice of Saddleworth and Alison Hughes, Head of Learning at BFS.

## Links with Holy Trinity School

Our 2020 Lent Charity is Mercy Ships – A joint initiative of Church and School.

Mercy Ships is a life-transforming surgical charity, powered by prayer, crewed by volunteers and partnered with the Church. As well as donating money during Lent, we also ask people to collect and bring used stamps to church throughout the year.



### Would you like to read a Bible story or support children with their reading?

If you are interested please get in touch with Revd John and if necessary he or Beverley Johnson will go into school to make introductions and start the DBS process required before you can start.

## Silent Eucharist

Does your life sometimes feel overwhelming?

Are you looking for some space to stop and reflect?

Try our "Silent Eucharist" held monthly (see below).

Some feedback from December's Silent Eucharist

*"Thank you for a beautiful service. It was everything I needed - peaceful, quiet and prayerful. Even the reading on the slip of paper I chose was helpful as it said '... in rest and quietness I will find my strength.' In all the busy-ness, thank you for helping me to rest in the Lord this evening."*



## "Pledges on Justice and a Fairer World"

We continue the theme of justice in thoughts, prayers and deeds:-

**My Pledge for February:** I will add at least one Fairtrade item to my weekly shopping. During Fairtrade Fortnight (24<sup>th</sup> February to 8<sup>th</sup> March) I will commit to buying an item I haven't tried before.

**My Pledge for March:** I will use less plastic, disposable items and recycle more in general.

## Dates for the Diary

**Tuesday 11<sup>th</sup> February, 6:00pm**

**Silent Eucharist**

*"Listen to the silence. It has so much to say." Rumi*

**Tuesday 17<sup>th</sup> March, 6:00pm**

**Silent Eucharist**

*"Listen to the silence. It has so much to say." Rumi*

**Sunday 22<sup>nd</sup> March, 10:30am**

**Mothering Sunday**

We offer a warm welcome to everyone to celebrate Mothering Sunday. During a Family Service, the children will distribute small posies of daffodils. Please come along and give thanks for family life and to celebrate the love of God who is both Father and Mother to us all.



## Parish Contacts

Grapevine Coordinator	Dorothy Townend	r.townend@btinternet.com	01457 873861
Baptisms and Weddings	Dorothy Townend	r.townend@btinternet.com	01457 873861

# Christ Church Friezland

## Crib Service and Christingle

This delightful service, held on Christmas Eve, was extremely well attended. We had Blessing of the Crib, the Christmas Story, Carols and Christingle and everyone actively joined in - with many of the children coming dressed as characters to participate in the Nativity.



£300 was raised for The Children's Society, so thanks to all who attended and a special 'Thank You' to Gregg from Tesco for providing the Christingle oranges.

Lynda McCrea

## #FollowTheStar

Many thanks to all those who designed, built and installed the illuminated arrows and star, which were put outside church over Christmas to Epiphany.

These fabulous creations encouraged passers-by and regular attendees to access the 'Twelve days of Christmas Wonder' resources and, like the Three Kings, to meet with Jesus and follow Him.



Revd Mike commented:

*"I would like to thank everyone who helped with the '#FollowTheStar' project. It was a great success and had a real impact in attracting people in".*

## 'HOME'

- † What does 'Home' mean to you? Good or bad?
- † Small and cosy or large and luxurious?
- † Mobile or static?
- † Do you feel at home when in a church building or ill at ease?

Either way, come along with your thoughts and ideas to an alternative worship service on Sunday 2<sup>nd</sup> February at 4:00pm. **All are welcome.**

## 'The bells'

How wonderful to hear the bells ring out again following the recent renovation of the tower. Any budding bell ringers are welcome to come along and find out more about how you can join in.

## Eco Church

Some highlights from a busy year:

- † Duncan again led what has become our annual Creationtide service in September;
- † We are praying for creation and environmental issues each month;
- † There was a visit and presentation by Wellsprings El Tular, who support a village in El Salvador in many ways including helping them plant diverse crops;
- † Junior Church have been taught on an environmental theme and undertaken practical things such as making a bug hotel for the church grounds;
- † The first carbon footprint for the church and hall has been produced, assessing our energy consumption in 2018 and setting reduction targets;
- † A new A-rated-boiler was fitted, alongside a Nest control system and a new thermostat in the main church; all of which will help reduce our gas consumption;
- † Water-saving devices were fitted to three older, larger toilet cisterns – saving 3 litres a flush!
- † 'The Cheeky Panda' Bamboo toilet paper has been used in church and the hall throughout the whole year and also sold on, at cost, to the congregation each month. Almost 2,000 toilet rolls from hypo-allergenic, renewable bamboo!
- † Large wooden compost bins were built and are

being used to recycle compostable waste into fertiliser for the grounds;

- † Another bike repair and donation event was run by Megan in conjunction with Oldham community group, Positive Cycles;
- † A group from the wider congregation went for a fabulous walk up to Alphin Pike and Indian's Head;
- † Charles has been keeping our bird food topped up throughout winter and we have a few bird boxes around the site;

It has also been great to hear of the changes being made by members of the congregation in their own lives, which all add up into big impacts. For example, Joan used recycled brown paper for wrapping Christmas presents and decorated her Christmas tree with a multitude of coloured handmade woollen bobbles, a brilliant and very personal touch!



To help us move to a Silver award in 2020:

- † We will soon conduct a follow up carbon footprint for 2019 energy consumption and start to encourage our congregation to undertake a personal carbon footprint - we are part of the pilot for a new countrywide carbon footprint calculator for churches, so we will keep you posted on progress;
- † We will offset the carbon we have produced by supporting a renewable energy project;
- † Rain-collection butt(s) will be installed that can be used by churchyard visitors to provide water for flowers;
- † More walks will be offered for the congregation to join in with;

† We are part of an energy audit pilot being run by Parish Buying, so we are looking forward to receiving their findings and using the information to guide more energy saving measures;

† We are investigating having a land management plan professionally produced. It will help us to look after our land more appropriately, and make more informed decisions about how the grounds are maintained and how we can use the space in different ways;

† We will be holding more 'Green Gym' events, where the congregation come along to help with some ground maintenance tasks.

We hope you find inspiration to make changes in your church or personal life and look forward to hearing more from around the benefice.

Matt Carson

**Christ Church Friezland**

 **'HOME'** 

*An alternative worship service that explores the concept of 'Home'.*

**Sunday 2<sup>nd</sup> February**  
**at 4:00pm**  
**Friezland Church, OL3 7LQ**

*'Mi casa es su casa!'*  
*('My house is your house!')*

*So, make yourself at home...*

## Parish Contacts

Grapevine Coordinator	Yvonne Carson	grapevine.ccf@outlook.com	
ALM Worship	Duncan Ross	ross328@btinternet.com	01457 835261
ALM Prayer and Spirituality	Megan Harrison	megharrison64.aol.com	07817 771663

## Archdeacon Arrangements with Cherry Vann having become Bishop of Monmouth.

The Venerable David Sharples has become the new Archdeacon of Rochdale, while remaining a residentiary canon of the Cathedral. The Venerable Jean Burgess has agreed to become Archdeacon of Salford in addition to being Archdeacon of Bolton. The Archdeaconry of Manchester will not be directly affected by these changes, although the Venerable Karen Lund will consider, with her archdeacon colleagues, how their diocesan-wide responsibilities may best be redistributed between them.

# St Mary Greenfield

## Greetings

As I write, we are still in the last days of 2019 with much to be thankful for as we look back on the last twelve months, not least our Christmas celebrations and the love and joy we shared at such a special time of year.

On Advent Sunday, we held our Christingle service, and here is the unusual 'orangey' report written about it and its aftermath by congregation members, Derek and Elizabeth Pilkington.

## Christingle

Our joint Christingle service with St Mary's Primary School children from Class 3, parents, congregation of all ages, Scouts, Cubs and Beavers, took place in church at the start of Advent on Sunday 1<sup>st</sup> December.

Revds Angela and Barbara led the service with the use of various bits of technology which was, at times, non-cooperative. Class 3 did a presentation about the meaning of Christingle and its history.



We each made our Christingle during an appropriate prayer, so we could think about the meaning of each part of the Christingle: the red tape/ribbon, the orange, the 4 sticks, the raisins and the sweets, finally with the important candle burning at the centre. What a wonderful sight! Not eating the sweets and raisins too soon, was difficult for some!

## What do you do with all the left over oranges from Christingles?

### Make marmalade!

Following the Christingle service the oranges that were left were more than overwhelming and it was decided that we could just about cope with 14 lbs of fruit to make approximately 30 lbs of marmalade, this only dented the box that seemed to remain full.

## History

We have been collecting jars of all shapes and sizes since Christmas 2018. The 2017 version, the first, was nearly a disaster as it was a spur of the moment decision to save the few oranges left from going to the tip.

But then it was an SOS to members of the congregation for jars. It was a success and the marmalade sold well.



## Preparation

Visit the garden shed with bags to remove the jars from their spidery store. Thank goodness for the dishwasher, both jars and tops came out looking like Mrs Bucket's (Hyacinth) milk bottles. We were prepared and ready for the marmalade. Make sure you use a **very big pan** or you could be swimming in very hot sweet marmalade!



## Fruit

*Real* Marmalade uses Seville oranges, the bitter ones like the famous one that Captain Mainwaring bid for as a present to placate his wife. These oranges only seem to contain pips with no flesh and create all-sorts of problems, but that's where the setting agent, pectin, lives. The Christingle oranges this year were the sweet navel variety with no pips and I assume very little pectin. To improve the overall flavour a lemon will be incorporated and to get some form of set, pectin will be added.



## Method

Wash and cut up 3½ lbs of fruit including one lemon, removing pips. Put into your **very big pan** and add 2½ pints of water and bring to a rolling boil. Cover with lid to retain moisture and boil for ½ hour until the peel feels cooked.

*(This version of marmalade is for sale for church funds and is therefore for quantity not exhibition quality as looked for at the Women's Institute Competition, so the next process is a bit violent.)*

Remove the fruit and place it in a food processor and reduce it to a pulp. Add back to the fluid. Check you have at least 4 pints and boil again now the peel is a pulp for a further ½ hour. Check you have 4 pints of 'marmalade mush' if not, add water.

During all this mix 4 lbs of sugar with two 8 gram packets of pectin and place to warm in the oven. When the pulp is cooked to your satisfaction add the warm sugar slowly to the fruit, stirring with a wooden spoon, while continuing to boil for at least another ½ hour or until your marmalade is set. If you have the luxury of a sugar thermometer you are looking for a temperature of 103°C/104°C, or just keep testing by placing a small amount on a plate and placing in the fridge to cool.

During this process get your jars warm. It will make about 7 lbs. Make sure they are too hot to hold before filling with marmalade, you don't want the jars to crack after all that hard work. Cover with a circle of grease proof paper and seal with a lid. Admire your handiwork and pray it has set by breakfast time!



Making marmalade is **not** for the faint-hearted!

Derek Pilkington set about making four separate boilings of marmalade assisted by daughter Elizabeth (mainly in the role of finding the jars and washing up!).

#### Final touches...

'Aingarth' labels (Derek's house name) also titled Christingle 1, 2, 3, or 4

Squares of Christmas wrapping paper to place over the tops and to add the festive touch, fastened on with an elastic band.

Price labels to sell at the joint school/church Christmas Fair on Saturday 7<sup>th</sup> December and thereafter at church to raised funds for church.

**£1.00 to £2.50 a jar dependent on size.**

**The taste test was worth waiting for!**

What a wonderful reminder of the 'sweetness' and variety of all God's creation and how we can enjoy and share it with one another.

And now we remember those who have died in the past and whose names are written in our Book of Remembrance for February and March:  
 Freya Elizabeth Boswell, Barbara Shaw,  
 Allen Clayton, Frank Hallam, Eric Christopher,  
 Albert Evans, Basil William Rhodes, Hilda Hill,  
 Lucy Partington, Kathleen Clayton, Ann Loveridge,  
 Mary Cleverley, Isaac Partington,  
 Victor Joseph Hallam and Eileen Gail Parkin.  
 As we give thanks to God for them and their lives, and as we love and miss them, we are assured and blessed by the gift of eternal life in Jesus.

At Christmas, it was eighty years since King George VI used Minnie Haskins' poem during his Christmas message in the early months of the Second World War. It still holds true for us today. In our uncertain world, we can remain sure and confident of God's presence with us.

*'And I said to the man who stood at the gate of the year: "Give me a light that I may tread safely into the unknown."*

*And he replied: "Go out into the darkness and put your hand into the Hand of God."...*

*So I went forth, and finding the Hand of God, trod gladly into the night. ...*

*God knows. His will is best. ...'*

With my love and all God's blessings,

Barbara

## Parish Contacts

Grapevine Coordinator	Barbara Christopher barbarachristopher@cofeinsaddleworth.org.uk	01457 876802
Verger	Eva Holden	01457 873043
Organist	Graham Sheldon Graham.Sheldon@oldham.gov.uk	01457 513236
Flower Secretary	Pam Butler pambutler2@tiscali.co.uk	01457 876982
Gift Aid Secretary	Elizabeth Pilkington lizhpilkington@outlook.com	01457 837268
Charity Shop Manager	Lynda McGowan shel48@live.co.uk	07708 996919
St Mary's School, Headteacher	Mrs S M Hall info@greenfieldstmary.oldham.sch.uk	01457 872264

# St Anne Lydgate

## Greetings

As we start on a new year and new decade I think it is time to say a big thank to everyone who helps in any way; without your contribution we would not be the church we are.

During 2019 we have been very busy collecting items for Oldham Food Bank, the Asylum Seekers, the Mustard Tree (a centre which helps the homeless and the vulnerable) and at our Toy Service this year we collected for Oldham Women's Refuge. All the recipients of our donations have been very grateful for all items given and hopefully we can continue to do the same in 2020.



During the year we have again been knitting the "Angels" which left church and all 135 of them went out into the local community taking our good wishes of Peace, Joy and Love at Christmastime. We are also very grateful for all the donations of knitted 'Teddy Bears' which we give to the children being baptised. They are loved by the family receiving them.

### So please keep knitting!

We shall need 'Angels' again in December and 'Teddy Bears' are needed all year long.

Hopefully this year we can move towards being more Eco Friendly and any ideas on this front would be very welcome.



We already recycle printer ink cartridges and electrical items along with batteries in partnership with the school. So again any other ideas please let us know and then we can play a bigger role in saving the planet.

Pat Gillian

## Happy New Year!

### Some ideas to make it even better...

Well, that's another Christmas over and here we are in 2020, a new decade; where have the years gone? If you are making new year resolutions make them with thought, it's no use saying "I will lose 4 stones or go to the gym 5 times a week".

Look at doing little steps and the things you love:

- † go for a walk once or twice a week;
- † plant some seeds and enjoy them growing;
- † visit your children, or grandchildren more often;
- † or even just read that book you meant to,

but remember to thank God for all his love to each and everyone of us.

I am so grateful to Him for the evergreen plants which cheer us up during the long dark days. Here is my Rosemary and the little conifer with ivy.



I hope that you can find something to make 2020 a year to remember.

Anne

## Community Mindfulness

We are running a Community Mindfulness Course at St Anne's Church, Lydgate over three Monday mornings in February / March. Each session will last an hour or so and they will be run by representatives of MIND, the mental health charity.

Come along to our Morning Prayer service on Sunday 16<sup>th</sup> February at 11:00am and hear about what MIND do. This will also include an introduction to the course, which will be run on the Mondays of 17<sup>th</sup> February, 24<sup>th</sup> February and 2<sup>nd</sup> March.

**Everyone is welcome and there is room for all!**

Al Gillian



## St Anne's Youth Group at Christmas

Once again this year our Youth Group had a Christmas outing to Hollywood Bowl and once again Matthew Manifold was victorious! We followed this by a trip to McDonalds and a good time was had by all.



We finished the year by filling 'Smarties' tubes with spare change throughout advent and voted to donate the money to Manchester City FC's "City in the Community" charity.

Throughout the year our group has enjoyed making bacon butties and pizza, playing dodge ball and doing three-legged races as well as discussing topical issues and the Bible theme of the week.

We usually meet at 11:00am in the Parish Hall on the 2<sup>nd</sup> and 3<sup>rd</sup> Sunday of the month. New members are always welcome.

## Recycling for Church funds

We are now in a position to collect various ICT equipment which includes:

PCs, Laptops, PC Monitors, Tablets, Photocopier & Printers, Mobile Phones, Mice, Games Consoles, Keyboards, etc.

Please bring them to the church or parish hall.

**For more information please contact Sue Willett on 0161 425 7909 or 07808 474743**



## St Anne's Flower Team

The Flower Team has had another busy year arranging flowers in church for individual members of the congregation who sponsor an arrangement at the altar in celebration or remembrance of a particular date or person in their family life. We appreciate the generous donations made by the congregation towards the cost of the flowers in church at Christmas, Easter and Harvest.

The number of people in the Flower Team has fallen over the last few years as some have moved away and others have 'retired'.

With just two of us left on the team, Tracey and Joyce were very grateful that Sheila, Gill, Hannah and Sarah offered to help with the Christmas arrangements.



We would be delighted if anyone with an interest in flowers would like to join us. Neither of us has had any training in floristry – just a love of flowers and a willingness to experiment. Any willing volunteers would be given lots of support.



Please contact Joyce (0161 964 3202) if you would like to either sponsor flowers in church or join us to help with some of the arrangements.

## Parish Contacts

Grapevine Coordinator	Sue Willett	sue@nwsecretarialservice.co.uk	07808 474743
Parish Hall Bookings	Frank Boocock	fandmboo@btinternet.com	01457 873985
Junior Church	Lianne Marshall	lvmarshall@outlook.com	07725 650233
Baptism & Wedding Coordinator	Anne Smith		07507 339983
Sexton & Grave Enquiries	Al Gillian	patandalgillian@btinternet.com	01457 870162
Weekly Sheet Manager	Sue Willett	sue@nwsecretarialservice.co.uk	0161 425 7909
Vergers	Anne Smith		07507 339983

# St Chad Saddleworth - Parish Church

## Looking back...

We have had many visitors to the Parish Church in the last few months, which is great as it hopefully confirms our faith in going ahead with the extensive repair work needed to keep the Church safe and useable. All the special services have been very well attended. The All Souls service is now well established and grows in number each year. It gives solace to those who have suffered bereavement. The Remembrance Day service also has an increased attendance each year.

We had a Baptism as part of the Sunday service which is unusual these days but is so nice to be able to welcome the newly Baptised child and their family as part of the congregation.

The Christmas services were all very well attended starting with the Saddleworth School Carol Service with superb young musicians. The Sunday School Nativity was also a delight and a compliment to the hard work of the Sunday School teachers. The Crib service was very full and brings quite a few families who are not regular church attendees. During December we had the pleasure of a service led by Bishop Mark who always gives such insight in his preaching.

Some who visited Church have commented on the practice bell that has been loaned, it looks a bit like an oil drill on its stand. This weekend, the Bell Ringers have had an open weekend to encourage visitors to try their hand at ringing. We are very lucky to have a set of working bells that are rung regularly. Did you hear the peel of bells on Christmas Eve morning?

## Save Saddleworth Church

If you come up to the Parish Church now you will see that work has started on the repair of the large East Window area. The scaffolding is up and preparatory work is taking place. Soon the window will be removed and structural work will begin. Donations are still needed to pay for this work which will cost approximately £150,000.

You may also see that the flagstones have been replaced that were stolen in the summer. We are extremely grateful for the donation of flagstones and the skill and manpower to lay them. Thank you very much.

Alison Coates

## Candlemas and Christingle

After last year's beautiful service we have decided to combine these two special celebrations. On Sunday 2<sup>nd</sup> February at 11:00am at the Parish Church we will hold a service to celebrate Candlemas and Christingle. (There will not be a service at the Parish Centre on that Sunday.)



At Candlemas we celebrate the Presentation of Jesus at the Temple. It is called Candlemas because traditionally there would have been a long procession with lighted candles at the mass on this day reflecting Simeon's proclamation of "a light for revelation to the Gentiles" which in turn echoes Isaiah 49 v.6 in the second of the "servant of the Lord" oracles.

'Christingle' means 'Christ Light' and is used to celebrate Jesus Christ as the "Light of the World". The Christingles are made by the children at St Chad's School. All who celebrate Christingle are asked to hold a collection for the work of The Children's Society who help children and young people in the darkest situations imaginable.



Last year more than 6,000 celebrations raised almost £1.3 million to light up the lives of children between the ages of 10 and 18

**Do come and experience this special service.**

## The Children's Society House Boxes

The Children's Society house boxes are now due to be emptied and counted.

Please hand boxes to:

- † Mavis Green  
(Tel.: 01457 878706);
- † a churchwarden; or deputy warden

Or leave at:

- † your worship centre;
- † 27 Dorset Avenue, Diggle (my house).

Thank you! Mavis Green.



## Dates for your diary

**Sunday 2<sup>nd</sup> February, 11:00am**  
Christingle and Candlemas Service.

**Wednesday 14<sup>th</sup> March, 7:30pm**  
Concert by Oldham Music Service  
in aid of Save Saddleworth Church.

**Wednesday 1<sup>st</sup> April**  
Concert by Saddleworth School.

**Sunday 5<sup>th</sup> April, 9:30am**  
Palm Sunday Procession  
from Parish Centre.

# SAVE SADDLEWORTH CHURCH

**Oldham Music Service**  
presents  
**A Choral and Instrumental Concert**  
at  
**St Chad's Parish Church**  
on  
**Saturday 14<sup>th</sup> March at 7:30pm**

Ticket information  
and full programme details will be available soon.

Please feel free to contact our Appeals Team on  
[appeals.scs@cofeinsaddleworth.org.uk](mailto:appeals.scs@cofeinsaddleworth.org.uk)  
or visit  
[www.cofeinsaddleworth.org.uk/seeing-is-believing](http://www.cofeinsaddleworth.org.uk/seeing-is-believing)

## St Chad Saddleworth - Parish Church, Church Lane, Uppermill, OL3 6LW

### Contacts

Grapevine Coordinator	Sarah Barlow	sarah.barlow@talk21.com	07775 613787
Assistant Wardens	Tim Edge		01457 872429
	Debbie McCabe		07779 120346



### ‘The Beatitudes?’

Blessed are the weird people  
The poets and misfits; The artists;  
The writers and music makers;  
The dreamers and the outsiders  
for they force us to see the world differently.



Spotted outside a ‘deli’ in Kendal

# St Chad Saddleworth - Parish Centre

## New Lent Initiative

We have a new initiative for Lent this year instead of our usual Lent Lunches.

St Chad's School and Church Community Group invite you to join them each Wednesday afternoon in Lent between 2:00pm and 3:00pm for an exciting new project.

**Come and join us and find out more.  
Everyone is welcome.**

Further details from Sarah Adams 01457 875126.

## Dates for your diary

**Sunday 5<sup>th</sup> April, 9:30am**  
**Palm Sunday Procession**  
from Parish Centre.

**Friday 10<sup>th</sup> April, 9:30am to 11:30am**  
**Good Friday Children's Workshop**  
please see Sunday School leaders  
at Kilngreen and Parish Centre  
for more details.

## Coffee Mornings



Every other Saturday (more or less)  
between 10:00am and 11:30am.  
Admission £1.

**Saturday 1<sup>st</sup> February**  
in aid of Hearing Dogs for the Deaf.

**Saturday 15<sup>th</sup> February**  
in aid of Save Saddleworth Church.

**Saturday 7<sup>th</sup> March**  
in aid of WaterAid.

**Saturday 21<sup>st</sup> March**  
in aid of Save Saddleworth Church.

**Saturday 4<sup>th</sup> April**  
in aid of Namibia.

---

**St Chad Saddleworth - Parish Centre, Station Road, Uppermill, OL3 6HQ**

## Contacts

Grapevine Coordinator	Sarah Barlow	sarah.barlow@talk21.com	07775 613787
Assistant Wardens	Margaret Fletcher		01457 874941
	Sarah Adams		01457 875126
Parish Centre Lettings	Joe Hughes		01457 873165



## The Story so Far

Back in the 1980s, Brian Cordingley was visiting the USA as part of a church project looking at the spiritual underpinning of Christian community work. In his encounters he found that their inspiration was drawn from Latin America. Subsequently he found himself bringing messages of solidarity from the States to El Salvador, a country in the midst of civil war. He spent a week there and was terrified!

To cut a long story short, it was from his experiences there that Brian and later Barbara Martin came to be involved in supporting the community of El Tular. Barbara spent a year there, and Brian and others were involved as independent overseers in the elections. Help was mustered from Rochdale and Saddleworth and in 1996 'Wellsprings' became official. It's a fascinating story!

To fill in the gaps, one of our Trustees, Howard Sutcliffe, has worked with Brian Cordingley to put together a collection of articles entitled 'El Tular the Story so far'. See the pages under 'Home' on the website:

[www.wellspringseltular.org](http://www.wellspringseltular.org)



## News from Balsamo

For the first time, David, Frances and Rosie recently held a Whatsapp 'conference' call with Allan, our contact from Balsamo. With the help of some Spanish translation from Frances and David we were able to ask questions and catch up on developments in El Tular and can now update you:

**Education** - Nine young people were able to attend a work orientation day, to help them consider their transition into working life. Gaining employment outside the community is crucial to be able to afford food when drought increasingly affects their maize harvest.

**Youth employment** - Since 2014, 23 of the young people who completed technical studies, with assistance from Wellsprings, are now gainfully employed in the following occupations:

2 work in auto mechanics workshops, 2 in call centres, 3 in restaurants, 5 are enlisted in the army, 1 is an agent of the National Civil Police, 2 are studying, 2 are outside



the community (one in Spain and the other is a missionary of a Christian church), 1 works in factory, 4 are in employment, work helping at home and in agriculture with their families. The list of occupations reflects the employment opportunities that young people are currently experiencing in the country.

Margarita Abigail Perez is a student who has benefitted from the support of Wellsprings El Tular. She is now studying English in the city.

**Visit to El Salvador** - Spring 2020 is your chance to join a group visiting El Salvador in April/early May. Experience life living in the village of El Tular, take in San Salvador, home of the Oscar Romero museum and see the rural landscape.



If you're curious to know more, see our website 'visit' page and get in touch. The visit will last approximately 12 - 14 days and is self-funded by those who wish to take part. However, if the cost is the only thing holding you back, do speak to us.

For more details email [info@wellspringseltular.org](mailto:info@wellspringseltular.org)

# St Chad Saddleworth - Kilngreen

## St Chad's All Stars pantomime nominated for awards!

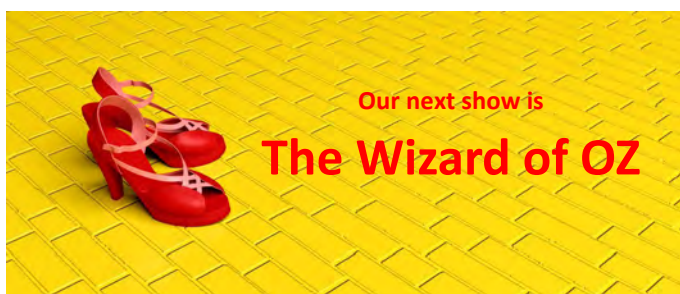
We had a shaky start to rehearsals when our new dame had to bow out due to illness. Geoff Iles took over the role having learnt all his lines as Pharaoh Rocher. Then we had to find another Pharaoh!

That said, our latest pantomime of 'Ali Baba and the Four Tea Thieves' was a huge success! We have had many good comments from our audiences and our chair, Kate Millett, stated:

*"I have never known such a happy and positive atmosphere in the dressing room. Everybody was enjoying doing the show, and helping each other out along the way".*

Another first is that the area representative for the **National Operatic and Dramatic Association** (NODA) visited us to review the show. To our surprise she not only gave us a very positive review, she has also given us three nominations for NODA awards:

- † **Best Female Comedy Performance:**  
Hilary Edgerton as Assam Aggie Baba;
- † **Best Ensemble:**  
Ali Baba and The Four Tea Thieves;
- † **Best Pantomime:**  
Ali Baba and The Four Tea Thieves.



The performance dates are:

Wednesday 11<sup>th</sup> March, 7:00pm

Thursday 12<sup>th</sup> March, 7:30pm

Friday 13<sup>th</sup> March, 7:30pm

Saturday 14<sup>th</sup> March, 11:00am and 3:30pm

Tickets from Mike Jones on 07966 779215

We are always on the lookout for new members, so if you would like to try treading the boards, working backstage, building the sets or helping Front of House, please get in touch with Kate Millett on 07890 826 331. We particularly need some more stage crew.

## Looking back...

On **Remembrance Sunday**, Hilary Edgerton led a very contemplative service. The children had researched rationing and shared their learning. We talked about having enough and we remembered those who had sacrificed all for our futures.

The **Family Service**, led by Janet and Geoff, was all about 'Bees and the Bible'. Bees are very important and currently in danger due to climate change and our treatment of our planet.

We learned lots of facts about bees and the Bible. Bees and honey are widely mentioned and are important in both Judaism and Christianity. On the eve of Rosh Hashana, it is customary for Jews to eat symbolic food, including dipping leavened bread and an apple into honey, to symbolise the hopes for a happy and healthy new year.

There are many references to honey and health in the Bible; honey is also mentioned in the Quran and Hinduism.

Doug Batchelor, an American Pastor, in an article entitled 'Bee a Sweet Christian' looks at the importance of the honeybee, which he believes God made for a very special purpose. He sees the Christian Church as being like a beehive. As like bees in a hive, we come together in fellowship and support each other. He describes ways we can live as better Christians: we need to:

*'Bee Respectful', 'Bee Optimistic', 'Bee Holy',  
'Bee Sure to Share and Save', 'Bee Born Again'.*



During the service the children made beeswax candles and decorated bees on sticks. The service ended with a short prayer:

*Lord God, we thank you for the bees,  
and pray that we can help  
to keep them working within our community  
through planting seeds and growing flowers  
which help them to continue to thrive. Amen.*

Janet

## Sunday School Nativity

The children performed a traditional Nativity set to carols. The children always work very hard on this and it is a great joy for the congregation.



Many thanks to Janet and Geoff for the beautiful Nativity scene on Christmas Day.



## Looking ahead...

... to the period after Christmas and the #FollowTheStar prayer booklet. We introduced our Prayer Tree and used stars to write prayers for those in our hearts and minds, reflecting on how we can be ready for the season ahead.



## Kilngreen Garden Project

In the last edition we told you that the Brownies had installed hedgehog boxes.



Lynda Elmore has now planted lots of spring bulbs so they will add loads of colour come spring... watch this space.

The Friends of Saddleworth Church  
invite you to

# Afternoon Tea

Saturday 29<sup>th</sup> February  
2:00pm  
Kilngreen Church

## Celebrating St Chad's Day

Tickets from  
Alison Tel: 876760  
and  
Liz Tel: 810666

Tickets  
£8.50

Charity No:  
1042302

## Diggle Diamonds

This friendly group for older people in Diggle meets in the Hanging Gate on a Saturday morning once a month from 10:30am for coffee and friendship plus a raffle. The group also enjoys a summer outing and a Christmas Party in December.



All older members of the community are welcome, for more details contact Ken McWatt on 01457 829641 or 07923 904273.

Dates for your diary:

Coffee Mornings: 15<sup>th</sup> February, 14<sup>th</sup> March,  
18<sup>th</sup> April, 16<sup>th</sup> May;

Annual Summer Trip: Tuesday 2<sup>nd</sup> June;

Christmas Party: Saturday 5<sup>th</sup> December.

## St Chad Saddleworth - Kilngreen Church, Lee Side, Diggle, OL3 5JY

### Contacts

Grapevine Coordinator	Sarah Barlow	sarah.barlow@talk21.com	07775 613787
Assistant Wardens	Lynda Barlow		01457 878338
Kilngreen Lettings	Suzanne Bradshaw		07733 335784



## THE ROEBUCK RESTAURANT & INN

We are offering to donate 20% of the total of your meal bill back to your church.

This offer applies to bookings for Monday - Saturday lunch and Monday - Thursday evening.

To take advantage of this offer please email your booking to [info@the-roebuck-inn.co.uk](mailto:info@the-roebuck-inn.co.uk)  
or contact Sue at The Roebuck Inn, Strinesdale on 07855 471018

### N W Secretarial & PA Service

*For all your secretarial and PA needs*



*Freelance/pay as you go/  
virtual service*

- Typing: manuscripts, letters & envelopes, etc.
- Spreadsheets, audio typing & digital transcribing, etc.
- Computerised Sage accounts for small/medium businesses
- Filing and other clerical duties undertaken
- Telephone answering
- Work can be done in-house if required
- Need sickness/holiday cover in the office?

**Sue Willett**

*Copley Mill, Huddersfield Road,  
Stalybridge, SK15 2QF.*

**fsb**<sup>cs</sup>  
MEMBER

[sue@nwsecretarialservice.co.uk](mailto:sue@nwsecretarialservice.co.uk)  
[www.nwsecretarialservice.co.uk](http://www.nwsecretarialservice.co.uk)

0161 425 7909  
07808 474743

### Norman Wisenden Model Railways



New & used models bought and sold. Also:

- Books & Magazines
- DVDs & Videos
- Gift Vouchers
- Cards & Gifts
- Part Exchange
- Repair Service
- Modelling Tools & Accessories

Many other hobbies catered for to order



**Sue Willett**

*Copley Mill, Huddersfield Road,  
Stalybridge, SK15 2QF.*

**fsb**<sup>cs</sup>  
MEMBER

[info@normanwisenden.co.uk](mailto:info@normanwisenden.co.uk)  
[www.normanwisenden.co.uk](http://www.normanwisenden.co.uk)

0161 425 7909  
07808 474743



**What do we do at N W Secretarial & PA Service and why do people use our service?**

#### Reflecting

At the time of writing this article (early Jan), I have been reflecting on the past and what a difference that we have made to a number of our clients and people that we have worked with, and have helped in many different ways.

**Holiday & sickness cover:** Working together with regular clients providing consistency in cover whilst their staff are off work, ensuring

that they come back to a clear desk making it a stress-free return to work.

**Helping people achieve their dreams:** We type manuscripts for clients and helping them get their books published.

**Invited & introduced people** to inspirational networking events including the Antz Network.

**Minute taking:** Working with HR companies, schools and charities. I attend meetings and, using my laptop, capture what was said in the meetings, and then finalise the minutes back at the office.

**Near or far:** We are based in Stalybridge, but the location of our clients doesn't matter. We have worked with all kinds of people, some

local and some as far away as Nova Scotia in Canada.

**Audio files:** We transcribe audio notes that contain reports, meetings, interviews, and highly confidential items.

**Charities:** Collecting and opening post. Issuing certificates and thank you letters to donors. Banking donations. Updating spreadsheets. Telephone answering. Bookkeeping & minute taking to name but a few.

Why not give us a call on 0161 425 7909 or 07808 474743.

[sue@nwsecretarialservice.co.uk](mailto:sue@nwsecretarialservice.co.uk)  
[www.nwsecretarialservice.co.uk](http://www.nwsecretarialservice.co.uk)



# Look for a Book Saddleworth



Look for a Book is working towards rekindling a love of reading in children whilst encouraging them to explore the great outdoors.

Books have been hidden around Saddleworth with a letter that states what they are and who has hidden them. All you need to do is find a book. You can either read it and put it straight back or swap it for another children's book of your own.

## THE RULES

- Books must be child friendly.
- You can keep the book that you find but please make sure that you replace it with a new book in order to allow other people to join in.
  - Please try to reuse the bag that you find the book in to limit the use of plastic.
- Make sure that you leave your book in a sealed waterproof wrapper. Resealable food bags are a great option.
- You can leave a message or a letter with your book, you can even leave an extra little something in the bag if you would like. Bookmarks are a great idea!
- Please feel free to hide any of your own books at your leisure, contact the Facebook page "Look for a Book Saddleworth" if you would like a copy of the letter to include.
  - Books do not have to be returned to the same place that you find them!

It really is as easy as that! Happy hunting!

Please note that this is not a one off event, it's hopefully going to be happening 365 days a year 24/7 and even though it's wonderful to find a book we really need to make sure that we have people hiding them too, so please have a rummage through your books and see if there are any that you are willing to bag up and hide.

Book donations are always welcome and local collection can be arranged!



*Please share your adventures with us online:*

*Facebook - Look for a Book Saddleworth*

*Instagram - #lookforabooksaddleworth*

# Church of England in Saddleworth Who's Who

## Saddleworth Ministerial Team

Team Rector	Revd Canon Sharon Jones sharonjones@cofeinsaddleworth.org.uk	07738 966271
Team Vicar	Revd John Rosedale jrrosedale@gmail.com	01457 874209
Assistant Curate	Revd Aaron Jackman aaronjackman@cofeinsaddleworth.org.uk	07717 893466
Associate Priest	Revd Barbara Christopher barbarachristopher@cofeinsaddleworth.org.uk	01457 876802
Associate Priest	Revd Dr Michael Donmall michaeldonmall@cofeinsaddleworth.org.uk	07779 225063
Missioner for Discipleship	Revd Hilary Edgerton hilaryedgerton@cofeinsaddleworth.org.uk	01457 871704
Assistant Curate	Revd Pat Gillian patgillian@cofeinsaddleworth.org.uk	01457 870162
Assistant Curate	Revd Philip Williamson philipwilliamson@cofeinsaddleworth.org.uk	07736 416126
Reader	Mr Graham McGuffie grahammcguffie@cofeinsaddleworth.org.uk	01457 872239
Administrator	Mrs Susan Brierley office@cofeinsaddleworth.org.uk	01457 879977

## St Thomas Delph - PCC Officers

Churchwarden	Bill Maxwell	wardens@stthomasdelph.co.uk	01457 878512
Churchwarden	Vacant		
Secretary	Julie Lait	familylait@outlook.com	01457 829799
Treasurer	Janet Powell		01457 878828

## Christ Church Denshaw - PCC Officers

Churchwarden	Ros Martin	rosmartin05@hotmail.co.uk	07884 940608
Churchwarden	Vacant		
Secretary	Mary Rodgers	rodgers@delphman.myzen.co.uk	01457 874354
Treasurer	Carole Clarke	minihelenclarke@yahoo.co.uk	

## Holy Trinity Dobcross - PCC Officers

Churchwarden	Paul Wooding	churchwarden@holytrinitydobcross.org.uk	01457 878116
Churchwarden	Denis Cavanagh		01457 874343
Secretary	Vacant	secretary@holytrinitydobcross.org.uk	
Treasurer	Peter Whiffin	treasurer@holytrinitydobcross.org.uk	01457 872386

## Christ Church Friezland - PCC Officers

Churchwarden	Duncan Ross	ross328@btinternet.com	01457 835261
Churchwarden	Vacant		
Secretary	Vacant		
Treasurer	Deborah Thompson	debxrah@gmail.com	01457 875038

## St Mary Greenfield - PCC Officers

Churchwarden	Brian Greenwood	bgreenwood1938@gmail.com	01457 872913
Churchwarden	Vacant		
Secretary	Kath Jump	Kathryn.Jump@shoosmiths.co.uk	01457 875231
Treasurer	Al Gillian	patandalgillian@btinternet.com	01457 870162

## St Anne Lydgate - PCC Officers

Churchwarden	David Marshall	davemarshall@outlook.com	07590 074436
Churchwarden	Vacant		
Secretary	Sue Willett	sue@nwsecretarialservice.co.uk	07808 474743
Treasurer	Al Gillian	patandalgillian@btinternet.com	01457 870162

## St Chad Saddleworth - PCC Officers

Churchwarden	Ian Brett	ian.brett@btinternet.com	01457 875014
Churchwarden	Alison Coates	alison99@talktalk.net	01457 876760
Secretary	Liz Rooke	lizzierooke@gmail.com	01457 810666
Treasurer	Chris Chard	chard.chris@gmail.com	01457 874165

## Valentine's Day - 14<sup>th</sup> February

There are many stories attached to the origin of this day. In country areas it was the day on which birds were supposed to choose their mates and it may be connected with Lupercalia, a festival of ancient Rome, which was held on 15<sup>th</sup> February.

It is thought that there were two St. Valentines, one an Italian bishop and one an Italian priest, who were both put to death for their faith on the same day. Neither of them, however, seem to have any connection with lovers.

In England, it used to be the custom for the girls to draw lots for lovers or husbands and these were known as 'valentines'. The valentine gave the girl a present, often a pair of gloves. It was always a good idea to have gloves handy so that one can be dropped when a young man walks past! From the early part of the last century, cards decorated with hearts began to appear in the shops and the custom was that it should include a four-line verse beginning with:

**"Roses are red and violets are blue"**

A Valentine card is not usually signed, as the person to whom it is addressed must guess who sent it. Victorians popularised flowers attributing meanings to each bloom. A rose meant love, a lily meant beauty, and orange blossom meant marriage and eternal love. Flowers and cards are now a popular way of showing affection on 14<sup>th</sup> February.

Dorothy Townend

# Arithmetic Limited

## Accountancy and Bookkeeping Services

- ✓ Bookkeeping
- ✓ Payroll Services
- ✓ VAT Return Preparation and Submission
- ✓ Making VAT Digital compliant
- ✓ Year End Accounts Preparation
- ✓ Self Assessment Tax Return Preparation and Submission
- ✓ Corporation Tax Return Preparation and Submission
- ✓ MGD Returns
- ✓ Company Formation and start up services

**Contact David Marshall for a no obligation conversation about your business needs - however big or small**

Text or Telephone: 07590 074 436 or Email: arithmeticlimited @gmail.com

**10% of your fee donated to your chosen church or charity**



Millbrook Care Home enjoys a wonderful location in the popular town of Stalybridge in Manchester and is a welcoming, purpose-built home offering residential care in luxurious surroundings



Our welcoming care home offers a home-from-home where older people receive the care they need and the support they want to continue to live their life with dignity and choice.

#### Offering:

- Personalised care and support
- Sun lounge with patio doors
- Cinema
- Hairdressing salon
- Wellbeing programme
- Carehome.co.uk rating of 9.7

Please visit our website or contact one of our friendly Careline team.

W [hc-one.co.uk](http://hc-one.co.uk)

T 0333 999 8661

E [careline@hc-one.co.uk](mailto:careline@hc-one.co.uk)

A Huddersfield Road, Stalybridge, SK15 3ET

